

# Community REPORT

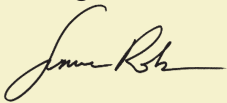
***Our mission is to assist residents with the conservation, management, and wise use of natural resources in Washtenaw County.***

Starting in June, I had the privilege to step into a senior leadership position at the Washtenaw County Conservation District (WCCD). Having spent three years as the Community Forester, I understood the impact our dedicated staff and Board of Directors, fueled by our mission and committed to our community, could make on our landscape and in peoples’ lives. This report is full of the astounding deliverables our team executed over the 2024 fiscal year.

However, this work isn’t feasible without you – our residents, our community, our friends, and our neighbors. With heartfelt appreciation, we thank you for your continued support of the millage which allows us to retain and attract talented staff to better serve you and provide locally responsive programs and services – like our School & Community Habitat Grant, Tool & Equipment Lending Library, Native Plant Expo & Marketplace, and Farmer Cost-Share. Millage dollars also allow us to pursue local, state, and federal grants, which often require in-kind or cash match to apply. In 2024, for every \$1 levied from the county millage, the WCCD secured an additional \$1.65 from outside sources, which supported the development of unique services and programs such as MIFarmLink, Michigan Climate Smart Farms, and Transition to Organic Partnership Program (TOPP). Lastly, we thank our devoted volunteers who return every year to multiple events – simply said, we would not have this tremendous impact without you.

The staff and Board of Directors take on this work because we desire a future where there are no fish advisories or harmful algal blooms, where every neighborhood has tall trees that capture stormwater and clean our air, where farmland is preserved and farmers are supported, where native animals and insects have the plants and habitats required to thrive, and where future generations will be able to continue living healthy and productive lives. We desire to empower all Washtenaw County residents to be effective stewards of land and shared resources. If you’ve enjoyed or benefited from one of our programs or services, please pass along this annual report when finished to a friend or neighbor in Washtenaw. Help us connect more of our community to conservation.

With gratitude,



Summer Roberts,  
Executive Director



## SIGN-UP FOR OUR MONTHLY E-NEWSLETTER

To stay informed of our educational events, volunteer opportunities, and sales, visit our website or call to sign-up for our e-newsletter!

NEW LOOK!



[washtenawcd.org](http://washtenawcd.org) |



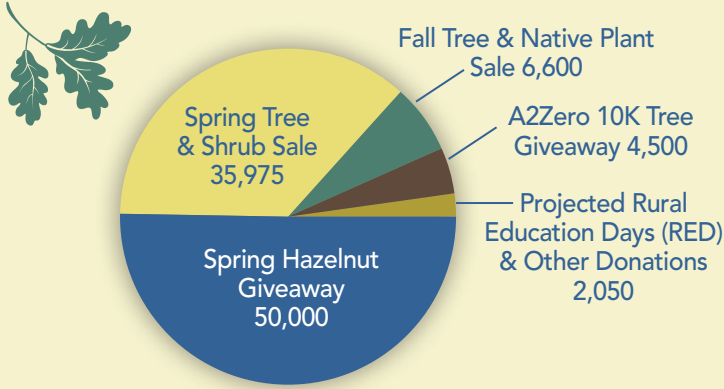
734-302-8715

## INSIDE this issue

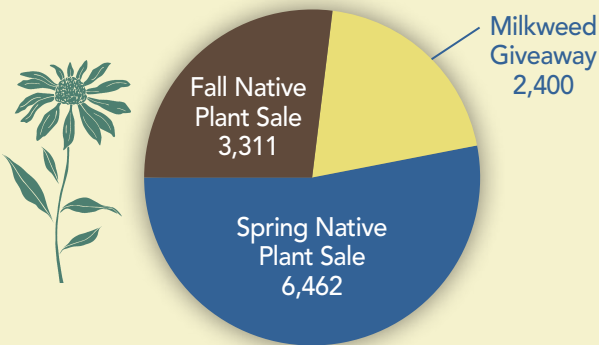
2024 By the Numbers.....	2	Equipment and Tool Rental “Lending Library” .....	5	Review of MIFarmLink, MCSFP, and TOPP .....	9
NPEM Highlights.....	2	2025 Spring Tree, Shrub & Native Plant Sales.....	6	Annual Meeting Program .....	10
Educational Events Recap.....	3	Watershed Work .....	7	2024 Awardees .....	10
Milkweed Giveaway.....	3	NRCS Recap .....	7	Volunteering.....	11
School and Community Habitat Grant .....	4	WCCD Financials, Staff, Board, and Election Info .....	8	Recap of JLW CSIMA.....	11
Farmer Cost-Share Report.....	4			Additional Events.....	12
MAEAP Summary.....	5				

# 2024 BY THE NUMBERS

## 99,125 Tree & Shrub Seedlings Distributed



## 12,173 Native Plants Distributed



## Tree Sale Partnerships

- MDNR Forest 2 MI Faucet program provided **\$1,800+ discounts** on **1,340 riparian seedlings** in Partnership with the Huron River Watershed Council & Legacy Land Conservancy
- We supported these partners' tree giveaways and planting projects:
  - Washtenaw County Parks & Rec
  - City of Ypsilanti
  - City of Dexter
  - City of Chelsea
  - Chelsea Area Garden Club
  - Chelsea Girl Scouts



**Rain Barrel SALES**

**Rain Barrels Distributed**  
**139**

**Totes Distributed** **15**

**Composters Distributed** **6**

## NPEM Highlights

In 2024, we hosted **2,219 attendees** at the Native Plant Expo & Marketplace (NPEM)! Attendees made the trek from as far away as Grand Rapids to shop and interact with **38 vendors**, including **10 native plant nurseries**, **local businesses**, **non-profits**, and **local government organizations**.

New and expanded features included: a "Nature Kids" activity area, more food trucks, an improved Speaker Stage with slide presentations, an Early Bird hour for eager shoppers, and more vendors than ever!

### Special thanks to our sponsors and partners, in particular:

Washtenaw County Water Resources Commissioner's Office, U-M Matthaei Botanical Gardens and Nichols Arboretum, Natural Community Services, and Huron River Watershed Council.

More details available at: [washtenawcd.org/2024exporeport](https://washtenawcd.org/2024exporeport)



Photo by Paul Michael Peters



# 2024 Educational Events Recap

In 2024, the WCCD was pleased to offer **17 educational opportunities** for area residents and farmers, attracting nearly **400 participants**. We also enjoyed interacting with more than **600 attendees** at co-hosted events, partner events, and conferences. A few of the highlights included:

- **Meet Your Forester & Forest Tours** – Forest landowners learned how consulting foresters could support their goals and signed up for site tours with experts.
- **Rural Solar: The Good, The Bad, and The Trade-offs** – The WCCD collaborated with researchers from the U-M to share the pros, cons, and misconceptions surrounding utility-scale rural solar. MIFarmLink was also shared as an alternative farmland preservation option.  
*See p. 12 for web link to recording of utility-scale solar energy presentation.*
- **Coffee & Conservation** – Area producers gathered at multiple events to discuss pre-determined conservation-related topics. Host sites included: Slow Farm, Agricole, and Gateway Farm.
- **How to Assess, Manage, & Preserve Your Land** – A traveling presentation with a collective of partner organizations. Online resources are available at [washtenawcd.org/landtoolkit](http://washtenawcd.org/landtoolkit).
- **Washtenaw Field Day** – Held at H&H Harvest in Saline focused on tile monitoring and cover crops and featured an exciting drone demo of cover crop application techniques.

Did you miss an event in 2024? Check out our YouTube channel to view some of our past events: [youtube.com/@wccd](https://youtube.com/@wccd)

To stay up to date with future educational programming visit our website and sign up for our monthly e-newsletter. Join us in 2025 for more great events!



## Butterfly Milkweed Giveaway Recap

Thanks to a repeat **\$5,000 donation** the WCCD once again was able to offer free milkweed plants (*Asclepias* spp.) at the 2024 Native Plant Expo & Marketplace (NPEM)! The endangered migratory monarch butterfly (*Danaus plexippus*) depends on milkweed as a larval host plant and also nectars on them as adults. At the NPEM, **629 participants** received a total of **2,400 plants** of **five different milkweed** species which will provide the monarchs with vital food sources.

More details available at:  
[washtenawcd.org/milkweedgiveaway](http://washtenawcd.org/milkweedgiveaway)



Photo by Paul Michael Peters





# 2024 School and Community Habitat Grant

The WCCD’s School and Community Habitat Grant (SCHG) program supports schools and community groups in obtaining native plants and creating wildlife habitats. Since its inception in 2021, the program has awarded over **\$16,000 in consultation and plant materials to 15 awardees.**

There was great interest in this year’s application round, we saw 16 different groups apply with a diverse geographic spread in the County. Our grant committee selected six 2024 awardees:

1. The Farm at Trinity, Ypsilanti
2. Risdon Park, Saline
3. Mill Creek Middle School, Dexter
4. Lyndon Township Hall, Lyndon TWP
5. Ann Arbor STEAM Northside, Ann Arbor
6. EMU Children’s Institute, Ypsilanti

## For Further Information on SCHG

[washtenawcd.org/SCHG](http://washtenawcd.org/SCHG)

On our webpage you will find examples of previous SCHG projects, and details on the upcoming application period set to start in early 2025. Thank you to all the volunteers, and community members who make SCHG an ongoing success!



# Farmer Cost-Share Report

In 2021, the WCCD launched a farmer cost-share program funded by millage dollars to assist Washtenaw producers in implementing best management practices that protect and preserve natural resources. In 2024, **a record-breaking 13 applications were approved**, securing **170 acres of cover crops**, which reduce soil erosion and increase soil fertility, and establishing **19 acres of pollinator habitat**. The funds also supported an alley cropping project, which allowed a local farm to diversify their operation into agroforestry and assisted another local farm with diverting

rainwater around their livestock lot, significantly improving the quality of water runoff into local waterbodies.



**Remaining application deadlines for Fiscal Year 2025 include: January 1st, April 1st and July 1st. Please visit [washtenawcd.org](http://washtenawcd.org) to fill out a form online today!**

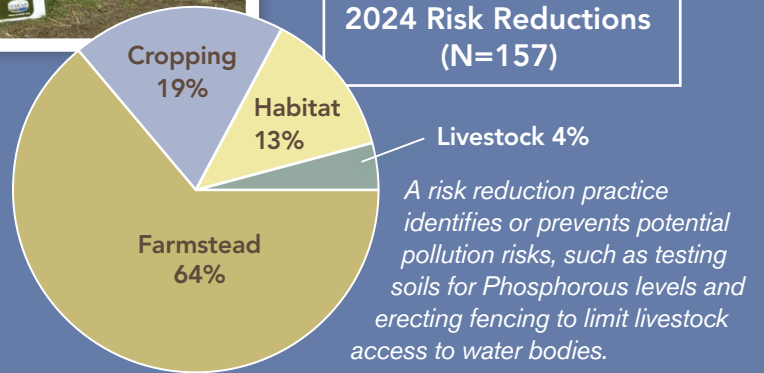
# 2024 MAEAP Summary

The Michigan Agricultural Environmental Assurance Program (MAEAP) is an innovative, proactive program that helps farms of all sizes and commodities voluntarily prevent or minimize agricultural pollution risks such as overapplication of fertilizers, applying fertilizers/pesticides too close to open water or wetlands, manure storage issues, etc. Reducing these risks can increase the productivity of the farm and reduce the cost of inputs, while also protecting the environment for us all. This is especially important in Washtenaw County, which lies in the Great Lakes drainage basin.

A total of **31 verifications and re-verifications** were completed on **12 farms and properties** totaling approximately **1,700 acres**. Although farm operations are still the heart of MAEAP, many landowners are also realizing the importance of proper stewardship of their forest and wetland habitats by participating



in the Forest Wetland Habitat (FWH) System of MAEAP. The FWH System made up a large proportion of the new Assessments, Verifications and Risk Reduction Practices, and this is a testament to the work being done by landowners of all sizes, stepping up and developing plans to protect habitats on their property.



*For more information visit [washtenawcd.org/maeap](http://washtenawcd.org/maeap) or contact John Scaramucci, MAEAP Technician, [john@washtenawcd.org](mailto:john@washtenawcd.org), 734-302-8715*

## Equipment & Tool Rental: "Lending Library"

Our free Lending Library offers various tools for soil testing, invasive species removal, pruning, garden preparation, and planting. We also offer a Tree Seedling Transplanter and a No-Till Grass Seed Drill for rent. Additionally, there are herbicide application tools offered in collaboration with the JLW CISMA. Much of the collection is also linked from the Ann Arbor District Library catalog.

In 2024, we launched new tools, including more of the popular small tree/shrub puller tools, a soil compaction tester, and a broadfork for garden preparation. To increase

tool accessibility, the WCCD has also collaborated with Growing Hope to make tools available at their Urban Farm's new tool bank located in Ypsilanti.

*The tools and equipment in the Lending Library are available to borrow or rent throughout the year and more information can be found on: [wccd.myturn.com](http://wccd.myturn.com). For reservation support or questions, contact the WCCD Resource Specialist at 734-302-8713 or [tools@washtenawcd.org](mailto:tools@washtenawcd.org).*



*Small trees removed by the Extractigator*





# 2025 Spring Tree, Shrub & Native Plant Sales

Your purchases support conservation work by the WCCD. Thank you!

Trees and plants are intended for conservation use: reforestation, soil erosion control, windbreaks, privacy screens, landscape naturalizing, and wildlife habitat improvements.

Native plants are species that have evolved and existed in this region prior to European settlement, which are adapted to local soils and climate, provide sustenance, and shelter to wildlife, and preserve



## TO PLACE AN ORDER

Orders can be placed in two ways:

**1) Online at [store.washtenawcd.org](https://store.washtenawcd.org):** Payment is accepted via check or credit card. This is the preferred ordering method and provides up-to-date inventory of each product.

**2) Enclosed paper forms:** Remove and complete the "2025 Spring Tree & Shrub Sale Order Form" and/or the "2025 Spring Native Plant Sale Order Form". Submit the form/s with FULL PAYMENT (check or money order), including SALES TAX to the WCCD office by the pre-order deadlines. No phone orders accepted.

**Order early for best availability.** Orders will be filled on a first-come, first-served basis while supplies last. The WCCD reserves the right to cancel orders and refund payments due to supplier issues or other reasons beyond our control.

**For questions regarding plant pre-orders, please contact our Resource Specialist at: [orders@washtenawcd.org](mailto:orders@washtenawcd.org) or 734-302-8713. For questions on the Native Plant Expo & Marketplace, please contact us at 734-302-8713 or [nativeplantexpo@gmail.com](mailto:nativeplantexpo@gmail.com).**

## TREE & SHRUB SALE

Pre-Sale Opens: January 2

Paper Forms Deadline: February 17

Online Store Deadline: March 17

### Pick Up Dates

Friday, April 18, 1 p.m. - 6 p.m.

Saturday, April 19, 9 a.m. - 11 a.m.

### Location

Washtenaw Farm Council Grounds

5055 Ann Arbor-Saline Road,

Ann Arbor, MI 48103

(3 miles south of I-94, Exit #175).

### Extra Trees & Shrubs

**Any extra trees will be sold on Saturday, April 19 starting at 10 a.m.**

## NATIVE PLANT SALE

Pre-Sale Opens: February 17

Online Store Deadline: March 17

### Pick Up Date

Saturday, June 7, 9 a.m. - 1 p.m.

### Location

Washtenaw Farm Council Grounds

5055 Ann Arbor-Saline Road

Ann Arbor, MI 48103

(3 miles south of I-94, Exit #175).

All pre-sale plants are from Designs by Nature or Wildtype nurseries and will be ready for pick-up during the Native Plant Expo & Marketplace on Saturday, June 7. The Native Plant Expo & Marketplace will feature native plant nurseries, native seed companies, landscaping companies, non-profit organizations and others. **Additional plants, seeds, and services will be available for purchase during the event.**



**2025 Rain Barrel & Composter Sales** Pre-order sales for Rain Barrels, 275 Gallon Rain Totes, Tumbling Composters, and supplies will re-open on January 2, 2025. The first distribution pick-up date will be Monday, March 24. Pre-orders must be made in advance of the pick-up date. After March, orders may be picked up from the office or other distributions in June or September, details will be posted on the WCCD website.



## WASHTENAW COUNTY CONSERVATION DISTRICT 2025 SPRING TREE & SHRUB PRE-ORDER FORM

**PICK-UP DATES:** Friday, April 18, 1-6 PM & Saturday, April 19, 9-11 AM

**Paper Forms Deadline:** Feb. 17

**LOCATION:** Farm Council Grounds, 5055 Ann Arbor-Saline Rd, Ann Arbor, MI, 48103

**Online Store Deadline:** March 17

**NAME:**

**PHONE:**

**ADDRESS:**

**EMAIL:**

Fill out this form, or (preferred) shop online at [store.washtenawcd.org](http://store.washtenawcd.org) for more plant information & pictures!

All seedlings & transplants are bare-root, unless otherwise specified, and must be planted ASAP after pick-up.

CONIFER SEEDLINGS	AGE	SIZE	25	50	100	200	500		QTY	COST
Pine, Red - <i>Pinus resinosa</i>	2	6-12"	\$24	\$38	\$58	\$100	\$220			
Pine, White - <i>Pinus strobus</i>	2	6-12"								
Spruce, White - <i>Picea glauca</i>	2	6-12"								

CONIFER TRANSPLANTS	AGE	SIZE	1	10 *	30	50	100	200	QTY	COST
Larch, American - <i>Larix laricina</i>	2	18-30"	\$8	\$66	\$100	\$140	\$250	-		
Cedar, White - <i>Thuja occidentalis</i>	3	6-12"	\$7	\$50	\$80	\$120	\$200	-		
Fir, Concolor - <i>Abies concolor</i>	3	8-14"	\$6	\$40	\$70	\$90	\$160	\$300		
Pine, White - <i>Pinus strobus</i>	4	12-18"								
Spruce, Black Hills - <i>Picea glauca 'Densata'</i>	4	10-16"								
Spruce, Norway - <i>Picea abies</i>	3	6-12"								

\* Mix & match Conifer Transplants, choose:  
(in multiples of 10 only, excluding White Cedar & American Larch)

Any 3 bundles of 10 for \$70,  
Any 5 bundles of 10 for \$90,  
Any 10 bundles of 10 for \$160,  
Any 20 bundles of 10 for \$300!

**TOTAL**

**QTY COST**

DECIDUOUS HARDWOODS	SIZE	1	25 *	50	100		QTY	COST
Basswood, American - <i>Tilia americana</i>	18-24"	\$9	\$90	\$150	\$290			
Hickory, Shellbark - <i>Carya laciniosa</i>	18-24"							
Aspen, Quaking - <i>Populus tremuloides</i>	18-24"	\$6	\$50	\$80	\$150			
Birch, Yellow - <i>Betula alleghaniensis</i>	18-24"							
Hackberry - <i>Celtis occidentalis</i>	18-24"							
Oak, Burr - <i>Quercus macrocarpa</i>	18-24"							

\* Mix & match Hardwoods, choose:

(in multiples of 25 only, excluding Am. Basswood & Shellbark Hickory)

Any 2 bundles of 25 for \$80,  
Any 4 bundles of 25 for \$150!

**TOTAL**

**QTY COST**

WILDLIFE SHRUBS	SIZE	1	25 *	50	100		QTY	COST
Elderberry, American - <i>Sambucus canadensis</i>	18-24"	\$6	\$50	\$90	\$150			
Dogwood, White Flowering - <i>Cornus florida</i>	18-24"							
Hazelnut, American - <i>Corylus americana</i>	18-24"							
Ninebark - <i>Physocarpus opulifolius</i>	18-24"							
Plum, American - <i>Prunus americana</i>	18-24"							
Serviceberry, Alleghany - <i>Amelanchier laevis</i>	18-24"							
Willow, Prairie - <i>Salix humilis</i>	18-24"							
Witchhazel, Common - <i>Hamamelis virginiana</i>	18-24"							

\* Mix & match Wildlife Shrubs, choose:  
(in multiples of 25 only)

Any 2 bundles of 25 for \$90,  
Any 4 bundles of 25 for \$150!

**TOTAL**

**QTY COST**



LARGER TRANSPLANTS	SIZE	1	5		QTY	COST
Elm, American - <i>Ulmus americana</i>	2-3'	\$12	\$50			
Maple, Silver - <i>Acer saccharinum</i>	2-3'	\$12	\$50			
Oak, White - <i>Quercus alba</i>	2-3'	\$12	\$50			
Paw Paw, Common - <i>Asimina triloba</i>	2-3'	\$12	\$50	unsexed, seed propagated		
Redbud - <i>Cercis canadensis</i>	2-3'	\$12	\$50			

FRUIT TREES	Height	Min. Caliper	Rootstock	NOTES	<i>bare-root transplants</i>	PRICE	QTY	COST
Apple, Granny Smith	5-6'	5/8"	Bud 118	Cross-pollination required	Winter hardy	\$29		
Apple, Honeycrisp 'Royal Red'	5-6'	5/8"	EMLA 111		Winter hardy			
Apple, Liberty	5-6'	1/2"	EMLA 111		Blight resistant			
Apple, Royal Empire	5-6'	3/4"	EMLA 111		Hardy & vigorous			
Cherry, Sweet 'Skeena'	5-6'	3/4"	Krymsk 6	Self-pollinating, late fruiting				
Nectarine, Flavortop	5-6'	1/2"	Bailey	Self-fertile				
Peach, Blazing Star	5-6'	1/2"	Bailey	Self-fertile				
Pear, Asian 'Hosui'	5-6'	1/2"	Betulaefolia	Cross-pollination recommended				
Pear, Blake's Pride	5-6'	5/8"	OHxF 87	Partially self-fertile				

BERRY PLANTS		5	10	25	QTY	COST
Blackberry, 'Triple Crown' - <i>Rubus fruticosus</i>	Cell plug (from tissue culture)	\$35	\$60	\$120		
Blueberry, Highbush - <i>Vaccinium corymbosum</i>	Root Cutting + 1 year, 12-18"	\$25	\$45	\$95		
Raspberry, 'Prelude' - <i>Rubus sp.</i>	Early ripening red, bare root	\$18	\$28	\$60		

TREE & SHRUB PACKETS	Each packet includes 10 seedlings, sized 12-18". All are native species. Species may vary depending on nursery availability.	PRICE	QTY	COST
Deerfood Packet	Hazelnut, Chinkapin Oak, Persimmon, Domestic Apple, Coralberry	\$30		
Wetland Packet	Spice Bush, Pussy Willow, River Birch, Button Bush, Nannyberry	\$33		
Riparian Packet - <i>WCCD Special!</i>	Hackberry, River Birch, American Larch, Pin Oak, Sycamore	\$41		
Nut Packet	Hazelnut, Northern Pecan, Butternut, Black Walnut	\$38		
Wild Berry Packet ( <i>sized 6-12"</i> )	Elderberry, Shadblow Serviceberry, Flowering Raspberry, Red Mulberry	\$28		

PLANTING AIDS	EACH	10	30	50	100	QTY	COST	
Weed Mats - includes 4 staples per mat	\$3	\$25	\$65	\$110	\$200			
Marking Flags - fluorescent orange on 36" wire	-	\$4	-	\$12	\$20			
Tree Shelter - 58", includes 74" fiberglass stake	\$10	For protection of hardwood / single stems						
Tree Stakes - 74" fiberglass stake	\$4	For use with tree shelters						
Root Dip - 2 oz bag	\$2.50	Creates hydrogel dip for about 2000 seedlings						
Fertilizer Tablets - 10 gram tablet	\$0.33	20-10-5 (N-P-K), use only as needed						
Plantkydd Repellent: 1 Qt. Liquid Spray \$25 ----- 1 Lb. Soluble Powder \$35 ----- 3.5 Lb. Shaker Jug \$35								

Double check both sides. **\*\*Don't forget to calculate sales tax!**

OFFICE USE ONLY	Rec'd by: _____
ORDER # _____	
Date Rec'd: _____	\$ Rec'd: _____
CK # _____ Cash _____ CC _____ Bal. Due: _____	
Refund / Notes:	

<b>SUBTOTAL</b>	
<b>ADD 6% SALES TAX</b>	**
<b>TAX DEDUCTIBLE DONATION</b>	
Add on or round up to support local school & community habitat projects!	
<b>TOTAL</b>	

Your purchases support conservation work by the Washtenaw County Conservation District. Thank you.

**PAYMENT METHODS:** Check or Money Order payable to: Washtenaw County CD. Credit Card accepted online.

- Drop off or Mail form with payment to: Washtenaw County CD, #201, 705 N. Zeeb Rd Ann Arbor, MI 48103
- Preferred: Order online with credit card or check: [store.washtenawcd.org](http://store.washtenawcd.org) - includes photos & species info!

**Refund Policy:** Plants and products will be delivered in good condition; any issues or concerns should be reported within a week of pick-up. Orders must be canceled 14 days prior to the pick-up date to receive a refund. Refunds for customer canceled or adjusted orders will be the full refund amount minus the credit card fees (3%). No refunds will be given on orders not picked up. If unable to personally pick up an order, customers are responsible for making other arrangements to retrieve their order on the pick-up date.

Please contact the WCCD Resource Specialist for questions: (734) 302-8713, [orders@washtenawcd.org](mailto:orders@washtenawcd.org)







# WASHTENAW COUNTY CONSERVATION DISTRICT

## 2025 SPRING NATIVE PLANT PRE-ORDER FORM

<b>PICK-UP DATE:</b> Sat. June 7, 9am-1pm at the Native Plant Expo & Marketplace	<b>Pre-sale Opens:</b> February 17
<b>LOCATION:</b> Washtenaw Farm Council Grounds 5055 Ann Arbor-Saline Road, Ann Arbor, MI 48103	<b>Pre-sale Ends:</b> March 17

*Native plants are species that have evolved and existed in this region prior to European settlement, are adapted to local soils & climate, provide sustenance & shelter to wildlife, and preserve biodiversity. Shop online to pre-order these and more from other nurseries on our website: [store.washtenawcd.org](http://store.washtenawcd.org) The Native Plant Expo & Marketplace offers even more onsite plant sales from many nurseries too!*

<b>NAME:</b>	<b>PHONE:</b>
<b>ADDRESS:</b>	<b>EMAIL:</b>

COMMON NAME	BOTANICAL NAME	SIZE	PRICE EA	* see reverse side for single species plug flats	QTY	COST
<b>GRASSES &amp; SEDGES</b>						
Bottlebrush grass	<i>Elymus hystrix</i>	4 1/2" pot	\$6.00	-		
Little Bluestem	<i>Schizachyrium scoparium</i>	4 1/2" pot	\$6.00	* available in plug flat		
Prairie dropseed	<i>Sporobolus heterolepis</i>	4 1/2" pot	\$6.00	-		
Sweet grass	<i>Hierochloa odorata</i>	4 1/2" pot	\$6.00	-		
Muskingum Sedge	<i>Carex muskingumensis</i>	4 1/2" pot	\$6.00	-		
<b>WILDFLOWERS</b>						
Bergamot	<i>Monarda fistulosa</i>	4 1/2" pot	\$6.00	* available in plug flat		
Big leaf aster	<i>Eurybia macrophylla</i>	4 1/2" pot	\$6.00	-		
Blue false indigo	<i>Baptisia australis</i>	4 1/2" pot	\$6.00	-		
Blue stem goldenrod	<i>Solidago caesia</i>	4 1/2" pot	\$6.00	-		
Blue vervain	<i>Verbena hastata</i>	4 1/2" pot	\$6.00	-		
Blue wood aster	<i>Symphotrichum cordifolium</i>	4 1/2" pot	\$6.00	-		
Butterfly milkweed	<i>Asclepias tuberosa</i>	4 1/2" pot	\$6.00	* available in plug flat		
Cardinal flower	<i>Lobelia cardinalis</i>	4 1/2" pot	\$6.00	* available in plug flat		
Compass plant	<i>Silphium laciniatum</i>	4 1/2" pot	\$6.00	-		
Foxglove beard tongue	<i>Penstemon digitalis</i>	4 1/2" pot	\$6.00	-		
Great blue lobelia	<i>Lobelia siphilitica</i>	4 1/2" pot	\$6.00	-		
Hairy beardtongue	<i>Penstemon hirsutus</i>	4 1/2" pot	\$6.00	-		
Lead plant	<i>Amorpha canescens</i>	4 1/2" pot	\$6.00	-		
New england aster	<i>Symphotrichum novae-angliae</i>	4 1/2" pot	\$6.00	* available in plug flat		
Northern blazingstar	<i>Liatris scariosa</i>	4 1/2" pot	\$6.00	-		
Prairie dock	<i>Silphium terebinthinaceum</i>	4 1/2" pot	\$6.00	-		
Prairie smoke	<i>Geum triflorum</i>	4 1/2" pot	\$6.00	-		
Purple coneflower	<i>Echinacea purpurea</i>	4 1/2" pot	\$6.00	* available in plug flat		
Rattlesnake master	<i>Eryngium yuccifolium</i>	4 1/2" pot	\$6.00	-		
Rose mallow	<i>Hibiscus moscheutos</i>	4 1/2" pot	\$6.00	-		
Showy coneflower / Black eyed susan	<i>Rudbeckia fulgida</i>	4 1/2" pot	\$6.00	-		
Showy goldenrod	<i>Solidago speciosa</i>	4 1/2" pot	\$6.00	-		
Sky blue aster	<i>Symphotrichum oolentangiense</i>	4 1/2" pot	\$6.00	-		
Southern blue flag iris	<i>Iris virginica</i>	4 1/2" pot	\$6.00	-		
White turtlehead	<i>Chelone glabra</i>	4 1/2" pot	\$6.00	-		
Wild columbine	<i>Aquilegia canadensis</i>	4 1/2" pot	\$6.00	* available in plug flat		
Wild petunia	<i>Ruellia humilis</i>	4 1/2" pot	\$6.00	-		
Woodland sunflower	<i>Helianthus divaricatus</i>	4 1/2" pot	\$6.00	* available in plug flat		



SINGLE SPECIES PLUG FLATS: WILDFLOWER or GRASS	COST	Species requested: *	QTY	COST
Please indicate <u>one</u> species per plug flat. A full flat includes 38 2" plugs of one species. * Only the indicated species are available as plug flats.				
	\$90			

GARDEN KITS: Each kit is made up of a full flat of 38, 2" plugs. Includes layout for 4'x10' plot. Mix of 10-15 species per kit. **Specific species will vary depending on availability. **		EACH	QTY	COST
Butterfly Garden kit	Black Eyed Susan, Butterfly Weed, Columbine, Sand Tickseed, Pale Purple Coneflower, Mountain Mint, Wild Petunia, Tall Sunflower, Spiderwort, Prairie Blazingstar, Ironweed, Early Sunflower, Rock Harlequin, Showy Goldenrod, Compass Plant, Western Sun, Gray Coneflower **	\$90		
Grass Garden Kit	Big Bluestem, Bottlebrush Grass, Canada Wild Rye, Indian Grass, June Grass, Little Bluestem, Prairie Dropseed, Side Oats Grama, Sweet Grass, Switch Grass **	\$90		
Monarch Way-Station Garden Kit	Spirea, Sand Tickseed, Black Eyed Susan, Northern Blazing Star, Butterfly Weed, Wild Petunia, Roundleaf Ragwort, Tall Sunflower, Camroy Sunflower, Prairie Sage, Hoary Vervain, Pale Agoseris, Prairie Blazing Star, Swamp Milkweed, Claspng Milkweed, Showy Goldenrod, Smooth Blue Aster, Stiff Goldenrod, Thimbleweed **	\$90		
Pollinator Garden Kit	Tall Sunflower, Showy Cone, Sand Tickseed, Pale Purple Coneflower, Butterfly Weed, Hairy Beardtongue, Boneset, Giant Yellow Hyssop, Gray Cone, Thimble Weed, Wild Petunia, Showy Goldenrod, Skyblue Aster **	\$90		
Rain Garden Kit	Mountain Mint, Hibiscus, Blue Vervain, Spiderwort, Iris, Button Bush, Joe Pye Weed, Boneset, Ironweed, Swamp Milkweed, Riddell's Swamp Aster, Prairie Blazingstar **	\$90		
Shade Garden Kit	Colombine, Thimbleweed, Big Leaf Aster, Joe Pye Weed, Bottlebrush Grass, Spikenard, Spiderwort, Boneset, Purple Meadow Rue, Clematis, Bluestem Goldenrod, Heart Leaf Aster **	\$90		
Shoreline Garden Kit	Awl Fruited Sedge, Monkey Flower, Cardinal Flower, Sweet Flag, Mountain Mint, Marsh Blazingstar, Bottle Gentian, Swamp Milkweed, Joe Pye Weed, Boneset, Blue Lobelia, Smooth Swamp Aster, Brown Fox Sedge, Swamp Goldenrod, Turtlehead **	\$90		
Wildflower Garden Kit	Black Eyed Susan, Butterfly Weed, Columbine, Compass Plant, Gray Coneflower, Hairy Beardtongue, Hoary Vervain, Ironweed, Nodding Wild Onion, Wild Petunia, Prairie Alum Root, Prairie Blazing Star, Pussy Toes, Rock Harlequin, Spiderwort, Showy Coneflower, Stiff Goldenrod, Purple Coneflower, New Jersey Tea **	\$90		

*Don't forget to calculate sales tax!*

OFFICE USE ONLY	Rec'd by: _____
ORDER # _____	
Date Rec'd: _____	\$ Rec'd: _____
CK # _____ Cash ___ CC ___ Bal. Due: _____	
Refund: _____	

<b>SUBTOTAL</b>	
<b>ADD 6% SALES TAX</b>	
<b>TAX DEDUCTIBLE DONATION</b>	
Round up to support local School & Community Habitat Projects	
<b>TOTAL</b>	

**Your purchases support conservation work by the Washtenaw County Conservation District. Thank you!**

**PAYMENT METHODS:** Check or Money Order payable to: Washtenaw County CD. Credit Card accepted online.

- Drop-off or mail form with payment to: Washtenaw County CD, #201, 705 N. Zeeb Rd., Ann Arbor, MI 48103
- Preferred: Order online with credit card or check: [store.washtenawcd.org](http://store.washtenawcd.org) - includes photos & species info!

**Refund Policy:** Plants and products will be delivered in good condition; any issues or concerns should be reported within a week of pick-up. Orders must be canceled 14 days prior to the pick-up date to receive a refund. Refunds for customer canceled or adjusted orders will be the full refund amount minus the credit card fees (3%). No refunds will be given on orders not picked up. If unable to personally pick up an order, customers are responsible for making other arrangements to retrieve their order on the pick-up date.

Please contact the WCCD Resource Specialist for questions: (734) 302-8713, [orders@washtenawcd.org](mailto:orders@washtenawcd.org)





# 2024 Watershed Work

In the summer of 2020, the Department of Environment, Great Lakes, and Energy (EGLE) sought grant proposals to write or update watershed management plans. Though many watersheds in Washtenaw County have plans to address water quality issues, one area did not: The Ottawa-Stony North Watershed. Working with the Monroe Conservation District a proposal was submitted in March of 2021 and approved a few months later.

Work on the plan was extensive. WCCD staff led steering committee meetings with stakeholders to gain their perspective on watershed issues. Water samples were collected throughout the watershed in both fair and rainy weather. Stretches of the watershed were walked to identify where nutrients and other contaminants might be entering waterways. Technicians surveyed the watershed identifying conservation practices existing on the landscape. Much of the past year was spent on drafting and editing the watershed plan, which was submitted to EGLE in September, after years of work and collaboration with partners.



The plan is a roadmap, outlining goals and priorities of stakeholders and landowners. To achieve those goals, management actions are laid out for decision makers to consider and pursue, but implementation will take additional funding. The next step for WCCD and the Ottawa-Stony North Steering Committee is to develop a proposal for implementing the plan and submit for another round of funding from EGLE. To truly improve water quality, we need to get the right practices on the ground.

To read the plan and learn more visit [washtenawcd.org/osnwmp](https://washtenawcd.org/osnwmp).

# NRCS Recap

The Natural Resource Conservation Service (NRCS) is the USDA's primary private lands conservation agency providing technical assistance and cost-share to support producers and landowners in addressing natural resource concerns. The WCCD partners with NRCS to provide 1:1 consultation with landowners and drive impactful stewardship through the: Environmental Quality Incentives Program (EQIP), Conservation Stewardship Program (CSP), and Agricultural Conservation Easement Program (ACEP).

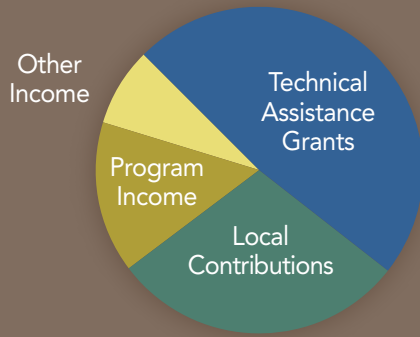
For the fourth consecutive year, Washtenaw County is a conservation leader in Michigan with **\$2,149,575 obligated** and over **2,005 acres in program contracts**. In 2024, Washtenaw landowners implemented vital practices, such as: pollinator habitat, cover crops, high tunnels, adopting conservation tillage, and managing invasive species.

During 2024, WCCD continued the partnership with NRCS by providing technical assistance to more than **10 new program participants**. Additionally, over **30 producers and landowners** received assistance with their ongoing CSP agreements. By continuing this partnership with the Ann Arbor NRCS field office WCCD is improving access to Farm Bill technical assistance and cost-share dollars for Washtenaw County farms.



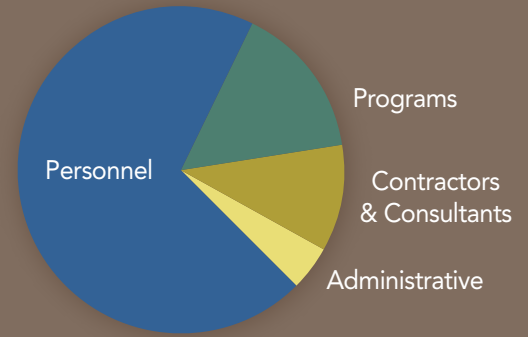
Program	Acres	Contract Dollars
EQIP	900	\$151,200
CSP	557	\$95,885
ACEP	548	\$1,902,490

# WCCD 2024 Financials\*



## REVENUE

Technical Assistance Grants . . . . .	\$697,609
Local Contributions . . . . .	\$423,768
Program Income . . . . .	\$213,316
Other Income . . . . .	\$112,405
<b>Total . . . . .</b>	<b>\$.1,447,097</b>



## EXPENSES

Administrative . . . . .	\$54,440
Programs . . . . .	\$193,371
Personnel. . . . .	\$892,606
Contractors & Consultants. . . . .	\$131,789
<b>Total . . . . .</b>	<b>\$.1,277,206</b>

\*Unaudited FY24 Financial Report

## Staff (contact info available at [www.washtenawcd.org](http://www.washtenawcd.org))

Nick Machinski, *Conservation Specialist*  
 John Scaramucci, *Conservation Technician (MAEAP)*  
 Kristen Sutter, *Natural Resource Specialist (NRCS)*  
 Megan Phillips-Goldenberg, *MCSFP Specialist*  
 Anna Cone, *CSF Conservation Technician*  
 Paul Buzzard, *CSF Conservation Technician*  
 Jill Dohner, *MiFarmLink Coordinator*  
 Kim Williams-Guillen, *TOPP Specialist*

Alex Cacciari, *TOPP Specialist*  
 Matthew DeJonge, *Community Forester*  
 Doug Reith, *Resource Specialist*  
 Dru Mark-Wilson, *Outreach Coordinator*  
 Deborah Shad, *Finance Administrator*  
 Molly Eassa, *Executive Assistant*  
 Summer Roberts, *Executive Director*

## Board of Directors

Shannon Brines, *Chair*  
 Matt Nolan, *Vice-Chair*  
 Hannah Weber, *Treasurer*  
 Maegen Gabriel, *Secretary*  
 Tom Shanahan, *Director*

### Finance Committee

Hannah Weber  
 Wayne Oliver  
 Sara Farley

### Human Resources Committee

Matt Nolan  
 Jennifer Watson  
 Patricia Denig

## Director Elections 2025 Voting & Voter Registration

All residents of the Washtenaw County Conservation District (Washtenaw County) who are of legal age and have demonstrated residency by one (1) piece of identification may vote by casting 1 ballot at the Annual Celebration on January 16th, 2025, 5:00pm-8:30pm at Cobblestone Farm, 2781 Packard St, Ann Arbor, MI 48108.

Residents may also vote by requesting an absentee ballot, or filling out a ballot at the WCCD office starting Monday, December 2nd, 2024 until the deadline: 12 p.m. on January 16, 2025. Candidate profiles for Brandon Henes and Patricia Denig are available online at [washtenawcd.org/board-of-directors](http://washtenawcd.org/board-of-directors).

### Two director positions are up for election:

**Seat 2:** 4-year term (full term through 1/18/2029)

**Seat 4:** 4-year term (full term through 1/18/2029)



## Michigan Farm Link (MIFarmLink): [mifarmlink.org](https://mifarmlink.org)

MIFarmLink is dedicated to securing Michigan's agricultural heritage for future generations by bridging the gap between farmers seeking land and farmland owners. In 2024, we launched a new website to easily connect new and beginning farmers to farmland and developed a 5-year Strategic Plan for the program. We also established Regional Representative positions to better serve all of Michigan with on-the-ground technical services and expertise. Subscribe to our newsletter or follow us for our "Find a Farm Friday" on social media.



### 2024 Farm Linking:

- **Properties Listed: 33 (220% of goal)**
- **Properties Linked: 7, totaling 276 acres (125% of goal)**
- **Farm Owners Assisted: 35 (233% of goal)**
- **Farm Seekers Assisted: 153 (510% of goal)**
- **Farmers Assisted with Other Resources: 35**

*To learn more, please visit our website or contact [info@mifarmlink.org](mailto:info@mifarmlink.org).*

## Michigan Climate Smart Farms Project (MCSFP): [miclimatesmart.org](https://miclimatesmart.org)

Supported by USDA funding and launched in FY24, MCSFP is developing a Climate Smart Farm Verification (CSFV) system designed to assist small/diversified farms in Washtenaw, Monroe, Wayne and Lenawee Counties. We have held **50+ advisory committee and working group meetings**, engaging major partners and remaining responsive to community needs, and **228 farmers participating in 5 educational events and demonstrations**. Marketing outreach included 45 blog posts, social media updates, and newsletters distributed, promoting climate-smart practices across Michigan.



Michigan  
**Climate  
Smart  
Farms**

To date, **8 farms have enrolled in Phase 1**, representing **353 acres** in total, including 152 forested acres and 330 heads of cattle. The team has collected **250 soil samples** and baseline operational data to calculate GHG emissions reductions in coming years.

Looking forward, MCSFP will expand pilot initiatives, with a focus on involving underserved producers, increasing soil sample collections, establishing new cost-share opportunities, and facilitating trainings for technical service providers. We're excited to build on our progress and continue advancing sustainable practices in Michigan's agricultural community.

## Transition to Organic Partnership Program (TOPP): [washtenawcd.org/topp](https://washtenawcd.org/topp)



**MIDWEST**  
TRANSITION TO ORGANIC  
PARTNERSHIP PROGRAM

TOPP, a USDA-funded initiative, expands organic farming in Michigan by connecting aspiring organic farmers with experienced mentors who help them navigate the certification process. Mentors also provide insight on farming methods, business management, and funding support. WCCD is partnering with MSU, MSU Extension, and the Grand Traverse CD to bring this mentorship and training program to farmers across the state. Michigan farmers have embraced this program, with **over 75 active mentor and mentee participants** – more than any other Midwest state! In 2024, **3 mentees applied for organic certification**, and we expect at least 10 more certifications in 2025.

From in-person field days to informational webinars to open office hours, we are thrilled to aid organic farmers across Michigan. **TOPP will accept another cohort of enrollees in winter 2025** – if you are interested in participating as a mentor, mentee, or just organic curious, visit the website and reach out to us for more information!



Photo by Kalle Brandt

# 77<sup>TH</sup> ANNUAL CELEBRATION

January 16th, 2025 - 5:00pm-8:30pm

Cobblestone Farm, 2781 Packard St, Ann Arbor, MI 48108

Join us in celebrating 77 years of conservation work in Washtenaw County. The evening will feature a keynote presentation by **Bridget O'Brien, Director of Gateway Farm** in Plymouth, MI and **Director of Garden Juju Collective**. Bridget will talk about their belief in the fundamental need for moving from sustainability to regeneration and how a permaculture mindset to conservation can heal people, communities and landscapes.

Attendees will also enjoy a farm-to-table dinner provided by **Harvest Kitchen**, a community awards ceremony, a snapshot of upcoming programming, board of director elections, and door prizes. There will be music, mingling, and merriment to be had by all who attend. Tickets are \$20 each, RSVP is required. **Tickets may be purchased at our website: [washtenawcd.org/annual-celebration](https://washtenawcd.org/annual-celebration).**



## 2024 Awardees

### Tree Conservationist of the Year: Terry & Sheila Calhoun

Sheila and Terry have lived in Lodi Township for over 35 years and have planted over 15,000 trees on Bratsholme Farm. Building community while staying fit and active have motivated the Calhoun's reforestation efforts.



### Conservation Farmer of the Year: The Henes Family

At H&H Harvest in Bridgewater Township, Brandon, his wife Melissa, and their daughters Mackenzie and Samantha approach farming with conservation as a cornerstone of their operation.



### Volunteer of the Year: Maren Sande

Maren's volunteer work reflects her deep passion for nature. Through tree sales and community events, she inspires others with positivity, dedication, and a commitment to preserving the environment for future generations.



### Beginning and/or Small Conservation Farmer of the Year: Kim Bayer

At Slow Farm, a certified organic U-pick farm in the Ann Arbor greenbelt, Kim grows over 100 varieties of fruits, vegetables, and herbs and is a dedicated advocate for biodiversity and sustainable food systems.

### Distinguished Service Award: Megan DeLeeuw *Recognizes long-term commitment and dedication to advancing the District's mission.*

Megan DeLeeuw served as WCCD's Executive Director from January 2018 – February 2024. During her tenure she secured an unprecedented countywide millage to expand reliable programming and services, instituted benefits such as health care and retirement funds to support staff, and procured sizable state and federal grants to fund innovative programs and increase staffing to better serve residents.





# Celebrating Our Volunteers

We have a growing community of dedicated volunteers who assist us in several events throughout the year! Volunteers are an invaluable part of the work we do at WCCD.

## Volunteer with WCCD!

Visit our website [washtenawcd.org/get-involved](http://washtenawcd.org/get-involved) to join our volunteer email list. The next opportunity to volunteer will be for the Spring Tree & Shrub Distribution, April 16th-19th. Volunteers help set-up, sort plants, prepack orders, and provide customers with their orders. It's a fun way to learn the plants and meet the community of growers! Later in the year, we rely on volunteer support for the Native Plant Expo & Marketplace, Fall Tree & Native Plant Distribution, and Tractor Tire Drive.

**As an added bonus:** Volunteers have early access to pre-sales and can pick up their order at the end of their shift. Please note, some shifts happen before we have the plants, so those volunteers are welcome to return early to pick-up their plants.

**Questions?** Call us at 734-302-8715 if you need assistance signing up for shifts online or if you'd like to change your existing shift times.

## 2024 Volunteer Numbers

- 269 Total Volunteers
- 4,968 Total Hours
- 33% Signed-up for more than 1 event
- 64 Post-Event Survey Responses
- 82% of Volunteers Responded 5/5 Overall Experience



## Native Plant Expo & Marketplace

*"This is an amazing annual community event with high quality, energy, information, and spirit."*



## JLW CISMA Recap

The Jackson, Lenawee Washtenaw Cooperative Invasive Species Management Area (JLW CISMA) is an invasive species focused organization covering three counties. Funding



from the Michigan Invasive Species Grant Program and the Great Lakes Restoration Initiative allows JLW CISMA to: survey and manage invasive species; assist residents in plant and animal identification; provide training opportunities to partners, non-profit organizations, and local staff; and create educational materials. In 2024, the JLW CISMA interacted with **1,343 people through 104 engagement opportunities** (events, seminars, training sessions, phone support, etc.) and reached **45,407 people through 360 passive efforts** (email, social media, mailings etc.). The JLW CISMA surveyed **600+ acres of land and water** and performed or coordinated herbicide treatment on **34.4 acres**, including public and high-quality land.

*For questions related to invasive species or native plant use, inquiries about having our staff speak at your event, or to sign up for our monthly newsletter, please contact the JLW CISMA Coordinator via email at [shikha.singh@macd.org](mailto:shikha.singh@macd.org) or phone 517-395-2089!*

## WCCD EVENTS

### Protecting Your Land, Preserving Our Future: Your Role in Conserving Washtenaw County's Natural and Agricultural Landscapes **TWO DATES!**

**March 3rd from 7 p.m. – 8:30 p.m.**

Lyndon Township Hall  
17751 N Territorial Rd, Chelsea

**March 10th from 7 p.m. – 8:30 p.m.**

Superior Township Hall  
3040 N Prospect Rd, Superior Charter Twp

Learn options for conserving or managing your farmland and natural areas. Following the presentation, staff from local conservation organizations will be available to discuss individual properties. More dates and locations TBA. **RSVP requested: online at [washtenawcd.org/events](http://washtenawcd.org/events) or call 734-302-8715.**

### Spring Tree & Shrub Distribution

**Friday, April 18 from 1 p.m. – 6 p.m. and Saturday, April 19 from 9 a.m. – 11 a.m.**

Washtenaw Farm Council Grounds, 5055 Ann Arbor-Saline Rd., Ann Arbor

**See the preorder forms enclosed in this newsletter or preorder online starting January 2nd, 2025.**

### 6th Annual Native Plant Expo & Marketplace

**Saturday, June 7th from 8 a.m. - 1 p.m.**

Washtenaw Farm Council Grounds, 5055 Ann Arbor-Saline Road, Ann Arbor

Features native plant nurseries, seeds companies, landscaping companies, and non-profit conservation organizations in a festival-like atmosphere with music and food trucks. Abundant plants, seeds, and services will be available for in-person shopping.

### NOW AVAILABLE!

Recording of Utility-Scale  
Solar Energy Presentation

by U-M's Graham  
Sustainability Institute



[washtenawcd.org/ruralsolar](http://washtenawcd.org/ruralsolar)



Photo by Paul Michael Peters