

FEBRUARY CONSERVATION UPDATE

Your Source for Conservation News in Washtenaw County



Conservation Ag Field Series

Organics and Alternative Markets for Field Crops

Tuesday, February 18th

9am-12pm

5055 Ann Arbor Saline Rd. Ann Arbor

Looking to diversify your field crop production into organic, niche grains, or hemp production? Join the Washtenaw County Conservation District, Michigan State University Extension, and the Washtenaw County Farm Bureau to learn about the production and market opportunities for these alternative cropping systems in Michigan.

Agenda

9:00 – 9:15: Welcome and Introductions

9:15 – 9:45: Overview of Organic Certification- Dan Rossman, Independent Organic Certifier

9:45 – 10:15: Dan Bewersdorff, Herbruck's Organic Grain Program Director

10:15 – 10:45: Emily Shettler, Pipeline Foods Merchandiser of Food and Feed Ingredients

10:45 – 11:15: Niche Grains - Megan Philips Goldenberg, Macon Creek Malt House Co-Owner

11:15 – 11:45: Hemp - Eric Anderson, MSU Extension Field Crops Educator

11:45-Noon: Wrap-up and final burning questions

Noon – 1 p.m.: Lunch and Networking

This workshop is Part 1 of a two-part series. Join us again in October for an on-farm tour and discussion of organic, niche grains, and hemp production.

The Conservation Ag Field Series is sponsored in part by: [The Washtenaw County Farm Bureau](#) and [Albert Lea Seed](#).

RSVP

Welcome Our New Directors and Staff!



Shannon Brines

Newly elected as a Director to serve a four year term.



Dr. Kim Williams-Guillen

Kim has joined us as an Education and Outreach Coordinator.



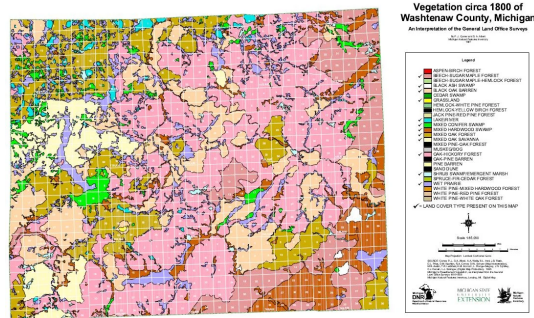
Hannah Bradshaw

Hannah is back as a newly appointed Associate Director.

How to Practice Responsible Land Management

In My Backyard: Pre-settlement Vegetation

It looks like winter has decided to show up this year after-all. So while you dream of getting out there and planting your garden or any trees you hope to pick up at our tree sale, why not take a look back; back to a time where the first Europeans were arriving to the area, to see what was growing over 200 years ago.



Backyard Conservation Education Series

Pollinator Gardening

Tuesday, March 3rd from 6-8 p.m.
Saline Liberty School (7265 N. Ann Arbor St. Saline, MI 48176) \$10 per person.

Vern Stephens of Designs By Nature LLC and the Washtenaw County Conservation District (WCCD) will be hosting an Pollinator Gardens Workshop. During the workshop, Vern will discuss the benefits of pollinator gardens, site selection, site prep, species selection, installation, management and maintenance.



RSVP

SPRING TREE & NATIVE PLANT DISTRIBUTIONS

Pre-order your trees, shrubs and native plants for pick up this Spring:



Pick up Friday, April 17th and Saturday, April 18th

Spring Tree & Shrub Distribution

Each spring and fall the Conservation District sells a variety of trees, shrubs, wildflowers and prairie grasses which are intended for conservation uses, such as:

- Reforestation
- Soil erosion control
- Windbreaks and screens
- Wildlife habitat improvements
- Landscaping naturalizing

Pre-order Trees and Native Plants

Pre-order trees, shrubs and native plants



Pick up pre-ordered plants at the Expo on Saturday, May 30th

2nd Annual Native Plant Expo & Marketplace

Saturday, May 30th from 9 a.m. - 1 p.m.

5055 Ann Arbor-Saline Rd

The Native Plant Expo & Marketplace offers landowners one convenient location to shop for Michigan native plants from several Michigan native plant growers, learn how to establish and maintain native landscapes and connect with companies specializing in planning native landscapes.

Pre-Order Native Plants

through our website store (linked above)
or download forms and mail in with check.
All order forms, guides and details about
the sale dates on our website.

[Pre-Order Trees & Shrubs](#)

School & Community Habitat Grant



The Washtenaw County Conservation District (WCCD) School and Community Habitat Grant is designed to assist schools and communities with accessing plants and establishing wildlife habitat. Grants will be awarded in the form of tree, shrub and native plant material through the WCCD distributions. Grant fund availability is dependent on donations made to the WCCD for this purpose and grant selections will be made based on the amount donated.

[Apply Now!](#)

Washtenaw County Water Resources

Commissioner's Office Presents:



Come train with us to be a Master *Rain* Gardener. During class you will design your own rain garden step-by-step. Share your knowledge and become your neighborhood's expert on rain gardens! Rain Gardens filter out pollutants so that our streams and rivers run clean. Anyone can plant one in their own back yard.

Location: Washtenaw County Building, 705 N. Zeeb Road, Ann Arbor, MI 48103.

Cost: \$89 - scholarships available.

Dates: Wednesdays Feb 26-Mar 25, 9:30-12:30.

Instructors:

Susan Bryan, Washtenaw County Water Resources Commissioner's Office

Harry Sheehan, Chief Deputy Water Resources Commissioner

Shannan Gibb-Randall of [InSite Design Studio](#).

Register

Washtenaw County Conservation District

7203 Jackson Rd, Ann Arbor
MI 48103 United States

734.761.6721, EXT. 5
MEGAN.DELEEUW@MACD.ORG



You received this email because you signed up or have purchased trees or plants from us.

[Unsubscribe](#)

mailer lite