



# Washtenaw County Conservation District

November 2019

## What's New for the Spring Tree & Native Plant Sales in 2020

By Megan DeLeeuw

If you are anything like me, you anxiously await the arrival of the seed and plant catalogs at the end of the season! Part of the excitement (beyond looking at all those beautiful photos of plants) is planning out your space and selecting what you need or want to try out next year. For many residents, the Washtenaw County Conservation District (WCCD) catalogs are part of this annual ritual —providing a diversity of plant materials to choose from for all of your conservation needs!

We work hard to offer a mix of species that landowners rely on annually for wind barriers, soil erosion control, screens, etc, while also introducing new species to allow for more diverse plantings across the county. By planting many different species over time, we are building more resilient ecosystems to sustain threats intensified by climate change such as diseases (e.g. Oak Wilt), pests (e.g. Long horned beetle), invasive species and unpredictable precipitation patterns!

The full Spring Tree & Shrub and Native Plant Catalogs will arrive with our mailed Annual Report (contact me if you need to be added to our mailing list), or available for download on our website starting January 2nd. You can also order directly on our website: [www.washtenawcd.org](http://www.washtenawcd.org), and view photos of each species along with detailed cultural information.

*Continued on page 2...*

### Our Staff and Board Directors

Matt Koenn, Chair  
Jill Dohner, Vice-Chair  
Howard Sias, Treasurer  
Julianne Chard, Secretary  
Don Rentschler, Director  
Megan DeLeeuw, District  
Manager  
Nick Machinski, MAEAP  
Technician

### CONTACT US:

Washtenaw CD  
7203 Jackson Rd  
Ann Arbor, MI  
48108  
734-205-1219 (O)  
734-718-5506 (C)  
[megan.deleeuw@  
macd.org](mailto:megan.deleeuw@macd.org)

Continued from page 1...

**New Tree & Shrub Species for 2020. For cultural details visit our website store starting January 2nd:**

Species	Size	Species	Size
Eastern Red Cedar	6-12	Saskatoon Serviceberry Shrub	18-24"
Bur Oak	18-24"	Nannyberry Shrub	18-24"
Tulip Poplar	18-24"	Gray Dogwood Shrub	18-24"
Hackberry	18-24"	Pussy Willow Shrub	12-18"
Northern Pecan	18-24"	Redgold Nectarine	5-6'
Black Walnut	18-24"	Highbush Blueberry (RC+1)	
Wild Black Cherry	18-24"	Redbud	3-4'
Deer Rood Packet (5 trees)	12-18"	American Linden (Basswood)	2-3'
Pollinator Packet (5 trees)	12-18"	Turkey Food Packet (5 trees)	12-18"
Colorado Blue Spruce	12-18"	River Birch	3-4'

### SPRING TREE & SHRUB SALE

Pre-Order deadline March 20<sup>th</sup>

**Pick up dates:**

Friday, April 17<sup>th</sup> 1-6 p.m.

Saturday, April 18<sup>th</sup> 9-10:30 a.m.

**Location:**

Washtenaw Farm Council Grounds, 5055 Ann Arbor-Saline Road (3 miles south of I-94, Exit #175).

**Extra Trees & Shrubs:**

Any extra trees will be sold on Saturday, April 18<sup>th</sup> starting at 10 a.m. at the Farm Council Grounds. You will need to obtain a number card prior to the sale of extra trees during the tree pick-up times on Friday and Saturday.

### NATIVE PLANT EXPO & MARKETPLACE

Pre-order deadline April 18<sup>th</sup>

Plants sold as pre-orders are from Designs by Nature, LLC exclusively and will be picked up during the Native Plant Expo and Marketplace.

Over 17 native plant nurseries, native seed companies, landscaping companies, nonprofit organizations and more will be participating in the 2020 Expo. Additional plants, seeds and services will be available for purchase during the event.

**Expo Date:**

Saturday, May 30<sup>th</sup>, 9 a.m.-1 p.m.

**Location:**

Washtenaw Farm Council Grounds

## **In My Backyard** By Nick Machinski

*How to practice responsible Land Management no matter the characteristics of your property.*

### **Part 2: Map Washtenaw**

I hope you were all able to get out in your back yards and observe some things this past month as the weather is certainly turning colder. But there is still plenty of things to observe. For example, I saw a cardinal perching in a birch tree, a blue jay sitting on the railing of the deck and heard several sandhill cranes from the nearby lake. The recent rain even allowed me to discover where water can pool and flow on my property.

However, as the weather gets colder we'll all remain inside a bit more and outside projects will grind to a halt. And that is okay, there is plenty of things that can be done; like more reconnaissance! The more you know about your property and the surrounding landscape, the more you can plan out your property to fit a specific need. So the next few parts of this series will focus on resources you can access to learn more about your property. This month I'm going to discuss an invaluable resource that I use nearly every day: **Map Washtenaw** (<https://www.washtenaw.org/1197/MapWashtenaw>).

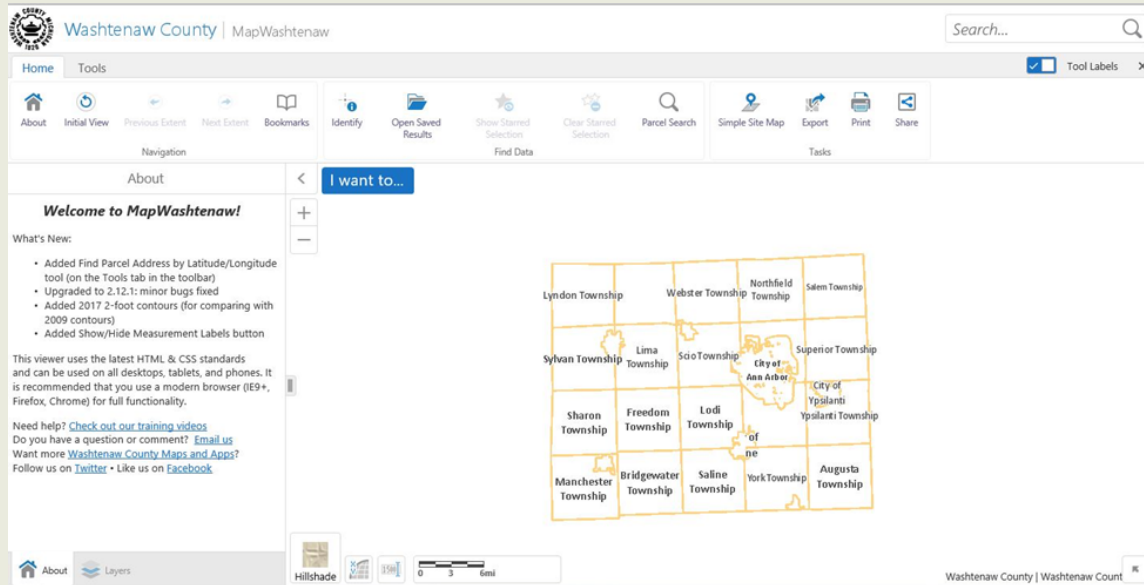
While I enjoy using Google Earth because it has more up to date imagery, Map Washtenaw is still extremely valuable (and free to use). It covers the entire county and even has imagery that goes back to the 1940's, much later than Google Earth's imagery. And it even has topography lines that can show you where the high ground is on your property or where water is likely to flow. If you feel intimidated by mapping, don't be. I'm going to walk you through some basic things you can do with Map Washtenaw to give you an idea of how to use it.

Go to the website using the link that I provided. Or copy and paste the link into your web browser. Once on the home page, you can scroll down and read the disclaimer (basically don't use the site for engineering purposes, surveying, etc. As with any mapping system, there is some error to these maps). Once you've read the disclaimer, you can accept the terms and it will take you to the mapping site.

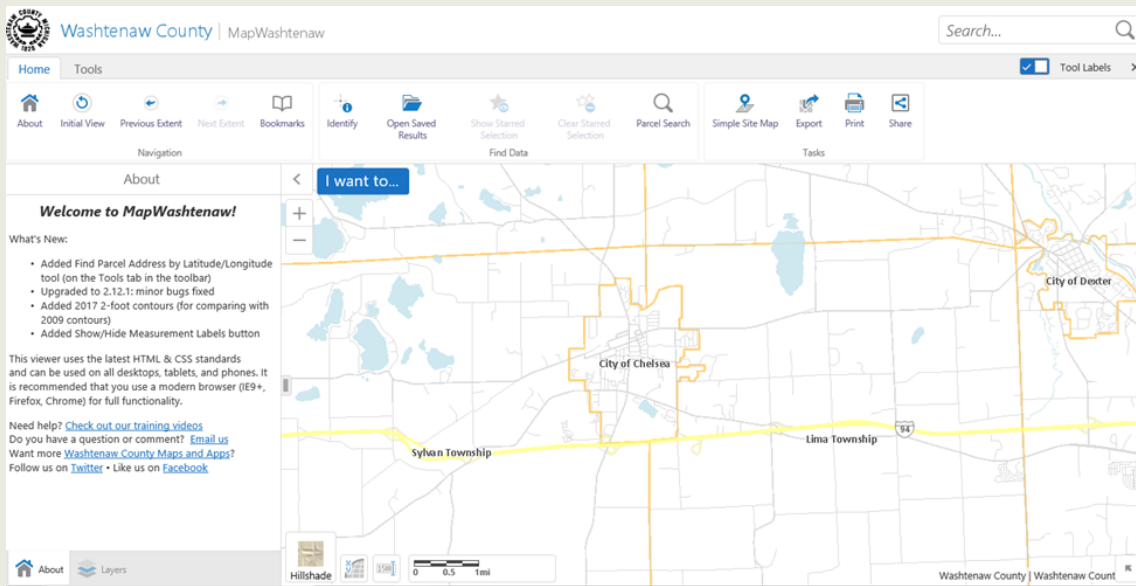
*Continued on page 4...*

Continued from page 4...

Your screen will look similar to this:



Let's zoom in a bit. And for teaching purposes, we'll use the City of Chelsea. That is the "blob" in-between Sylvan and Lima Townships. Scroll to zoom in to that area and you should have something that looks like this:



Let's add some color to the map. In the upper left Click the "Tools" tab and below that will be a "Layers" button, click there.

Your menu will change to reveal what layers are currently being displayed on the map. If you scroll down on this menu you'll find even more. You can turn layers on and off by clicking the check-box next to the layer name. The +

Continued on page 5...

Continued from page 4...

mark indicates that there are sub-layers that can be turned on and off as well.

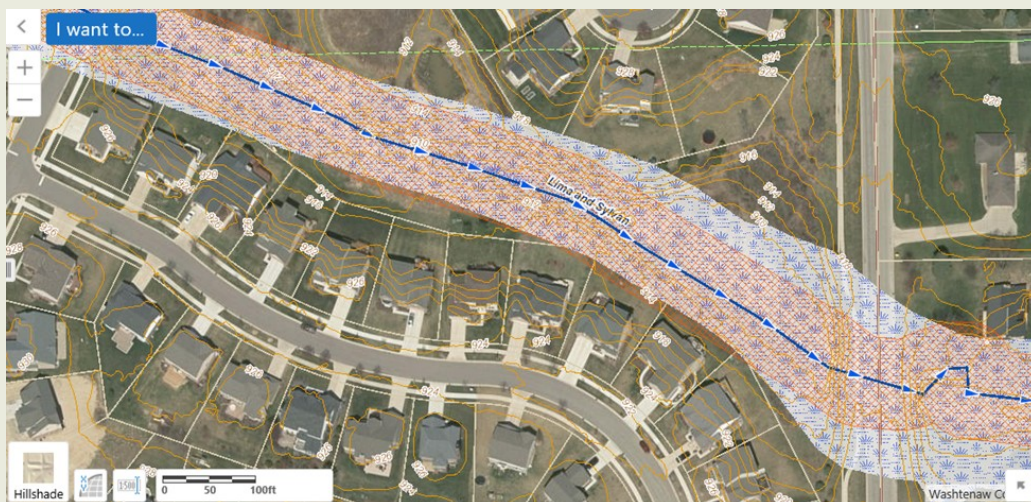
For our purposes, turn on the “Aerial Imagery” layer and you’ll have a map like this:



Now I’m going to zoom in to a house in this area, you can pick any house you’d like for this purpose. I’m going to show you some other layers you can use on your own property. So, if you feel comfortable, please find your own property if you’d like.

So, you’ve zoomed to a house or property. Now say we want to know where the high points are for this area we’re looking at. We’d do the following steps: In the “Layers” menu click the + next to “Natural Features” to access the sub-layers. Then click “2017 Contours (2ft).” Your map will be populated with 2ft contour lines. Giving you an idea of where slopes are on your property and where surface water is flowing and even collecting.

Now turn off that layer. Turn on the “Wetland” sub-layer. This layer corresponds to the 2005 National Wetlands Inventory. If this layer turned appeared on your property you likely have a wetland. Continued from page 4...



Continued from page 6...

There is a way to print your map, when you are happy with it. Go to the “Home” tab and go to “Print.” It will create an image in a pdf format, from which you can save your map and print it out.

I think you all can see the value of Map Washtenaw by this point. It can provide some great insight into your property that can assist you in making management decisions. Of course, there are plenty of other layers and tools to explore on this website, which I encourage you all to explore. If you have any questions, please contact me and I can try to assist you. Next time, we’ll look at how to determine what soil you have on your property and how we can get map of that.

## **Pesticide Review Classes** By Nick Machinski

The WCCD is teaming up once again with Michigan State University Extension (MSUE) to host a series of pesticide review classes. These classes are meant for attendees who plan on taking the Pesticide Applicators Exam or for people who need credits to maintain their applicator’s license. The next class will be held on February 19, 2020 9 a.m.-4 p.m. at 705 N. Zeeb Rd. Ann Arbor, MI 48107. The cost is \$20.00 and there will be a one-hour break for lunch. This review will be covering the Core Manual and will be worth 8 RUP credits.

There will also be review classes held from January 6-9th from 9am-4pm on the following categories:

General Pest Management (7A) – 8 category 7A credits

Turfgrass Pest Management (3A) – 8 category 3A credits

Right-of-Way Pest Management (6) – 8 category 6 credits

Commodity Fumigation (FUM) – 2 category FUM & 6 Comm/Priv. Core credits

For more information and to register for these specific classes, please go to the following link:

<https://www.canr.msu.edu/news/category-specific-pesticide-review-classes-offered-in-january-2020>

## **Follow up: Well Water Education in Salem Township**

By Nick Machinski

The WCCD, MAEAP and students from Eastern Michigan University, teamed up to put on a Well Water Education event in Salem Township’s townhall on November 2nd. Students were able to talk to local residents about well water and ground water issues. A flow model was present to demonstrate how water flows under our feet. The model also how contaminants from one source can flow and even contaminate well water. Some residents brought in samples of their well water for free water testing. They received feedback on their nitrate/nitrite levels, turbidity, conductivity and pH.

## UPCOMING EVENTS

### Join us to celebrate 72 years of Conservation Work in Washtenaw County!

Keynote: Gabriela Quinlan, PhD candidate at MSU on *Michigan's Native Bees*

**Thursday, January 16th at 6:30 PM.**

**5055 Ann Arbor-Saline Rd, Ann Arbor, MI**

Catered dinner by Moveable Feast and door prizes. Cost is \$12 per person. RSVP.

Event will include a keynote presentation on Michigan's Native Bees, an overview the Washtenaw County Conservation District 2019 Annual Report, local conservation awards ceremony and door prize drawing. Please contact Megan DeLeeuw to RSVP: [megan.deleeuw@macd.org](mailto:megan.deleeuw@macd.org) 734.761.6721

### Transitioning from Conventional to Organic Grain 101 & 102

The demand for certified organic grain is growing exponentially! Organic crops are grown using various conservation practices while also commanding significantly higher per bushel prices. Stay tuned for more details on this series in partnership with MSUE and the Washtenaw County Farm Bureau.

### Pollinator Gardens

Tuesday, March 3rd from 6-8 p.m.

Location TBA. \$10 per person.

Vern Stephens of Designs By Nature LLC will discuss the benefits of pollinator gardens, site selection, site prep, species selection, installation, management and maintenance.

## CONTRIBUTE TO THE SCHOOL & COMMUNITY HABITAT GRANT FUND

The WCCD School and Community Habitat Grant is designed to assist schools and communities establishing wildlife habitat! Grants will be awarded in the form of tree, shrub and native plant material through the WCCD distributions. Grant fund availability is *dependent on donations* made to the WCCD for this purpose and grant selections will be made based on donations collected through May 30th. Schools and nonprofit community groups may apply for tree & plant material as well as design assistance through April 24th. Awardees will be announced in June for planting in fall 2020.

To make a tax-deductible donation to the grant fund directly, add your donation to your tree order form (line provided on the form), mail a check to our office or donate directly on our website: [www.washtenawcd.org](http://www.washtenawcd.org).